



## SunGrow Inverter Wi-Fi Reconnection Procedure

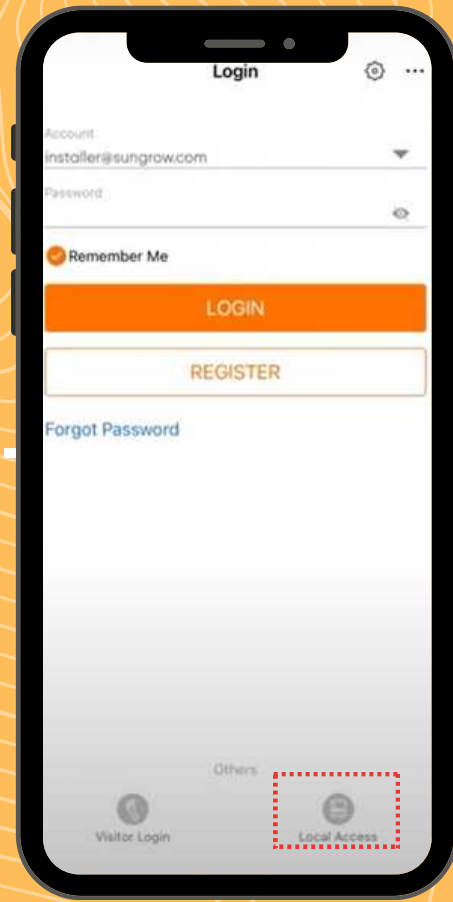


Watch the video here:

<https://www.youtube.com/watch?v=Pd8iXsv5IaU>

**SUNGROW**

[positiveenergy.com.au](http://positiveenergy.com.au)

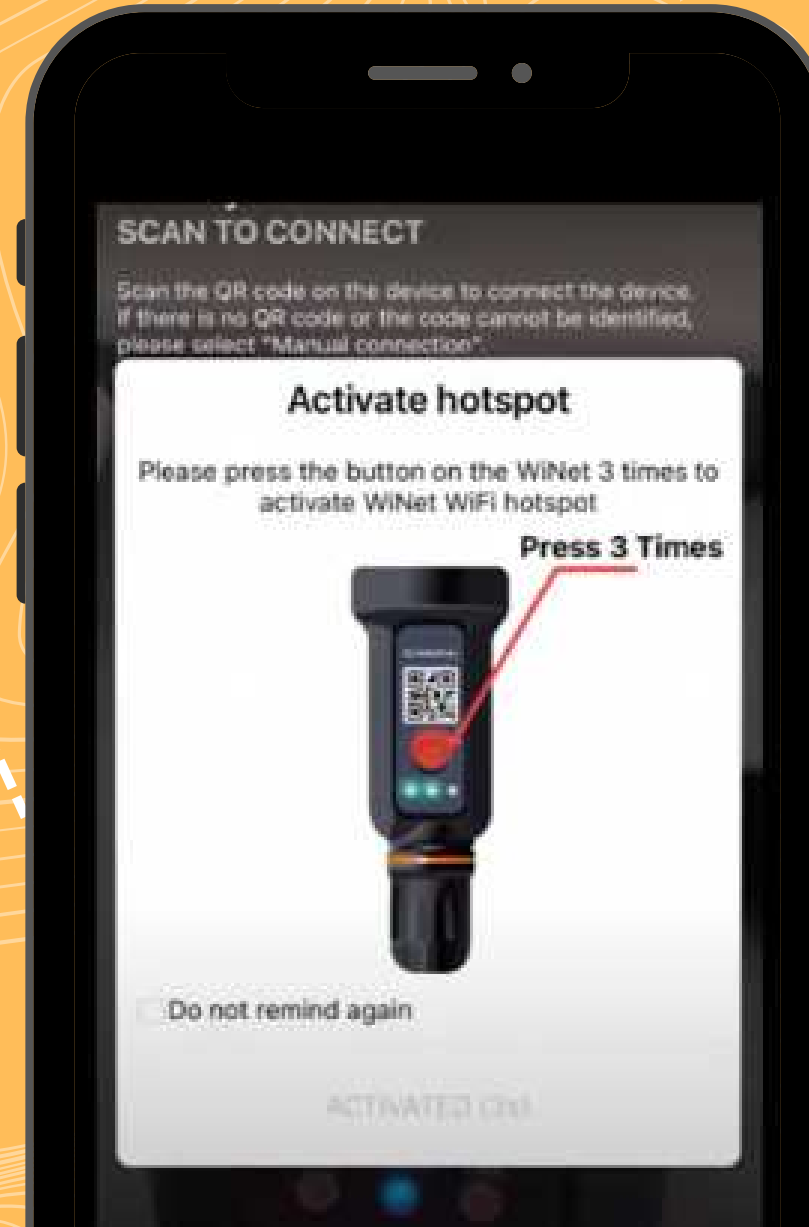


### STEP 1

Open the "iSolarCloud" and click on the "Local Access" Icon on the bottom right corner

### STEP 2

Scan the QR Code on the Wi-net module, press the orange button 3 times, then click join to connect



### STEP 3

Make sure to make note of the serial number of the WiNet-S or take a picture of the QR Code

This information will be needed during plant creation from remote later



## SunGrow Inverter Wi-Fi Reconnection Procedure

Watch the video here:

<https://www.youtube.com/watch?v=Pd8iXsv5IaU>

**SUNGROW**

[positiveenergy.com.au](http://positiveenergy.com.au)

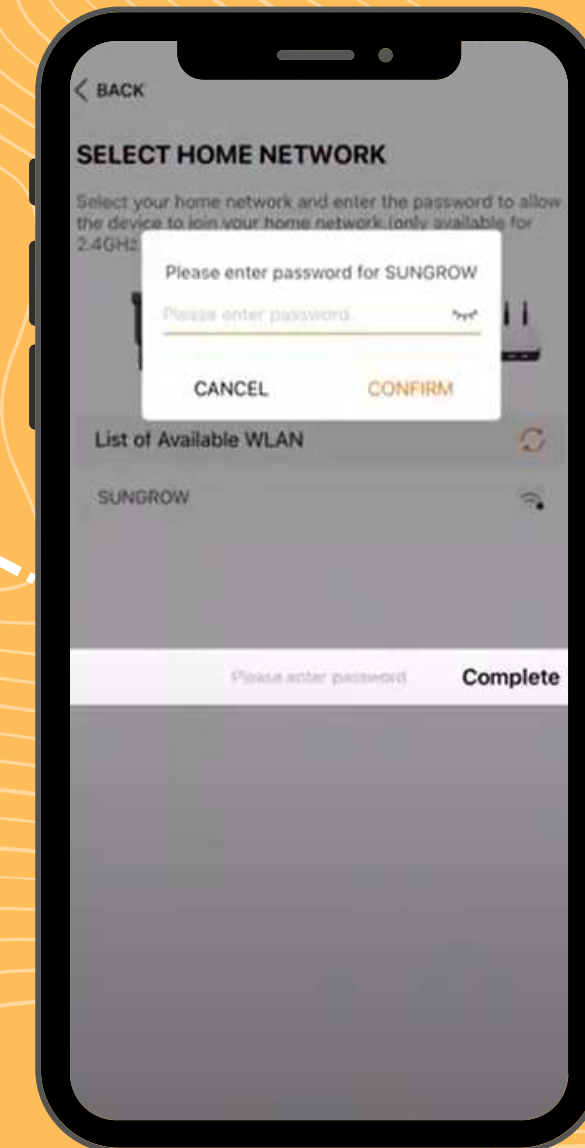
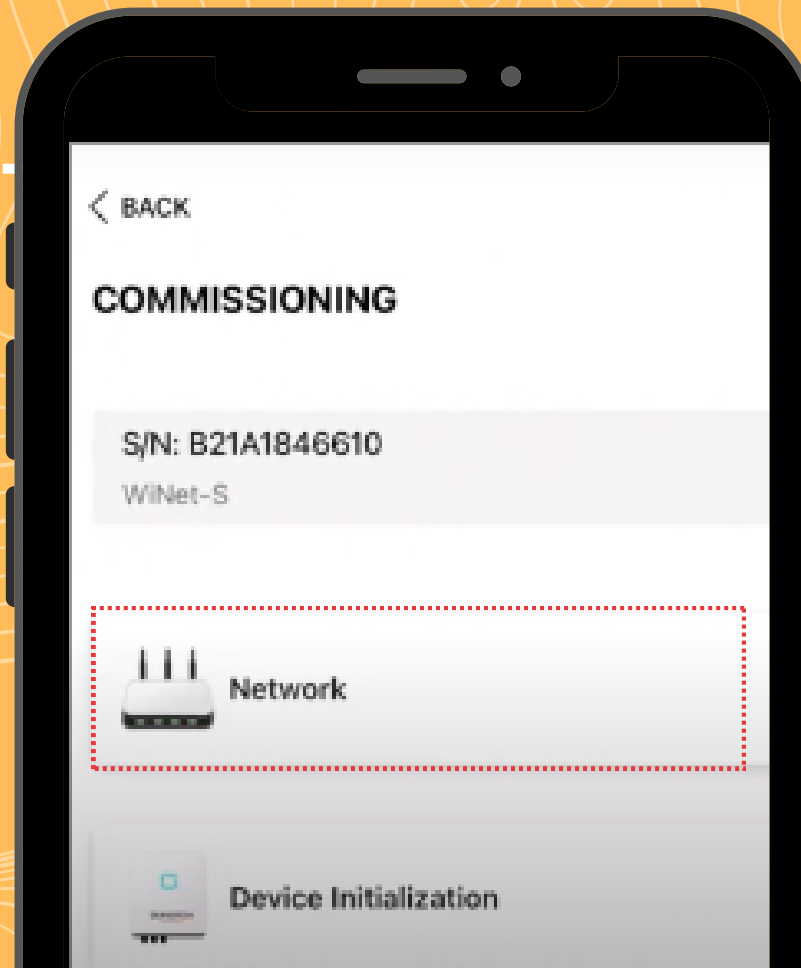
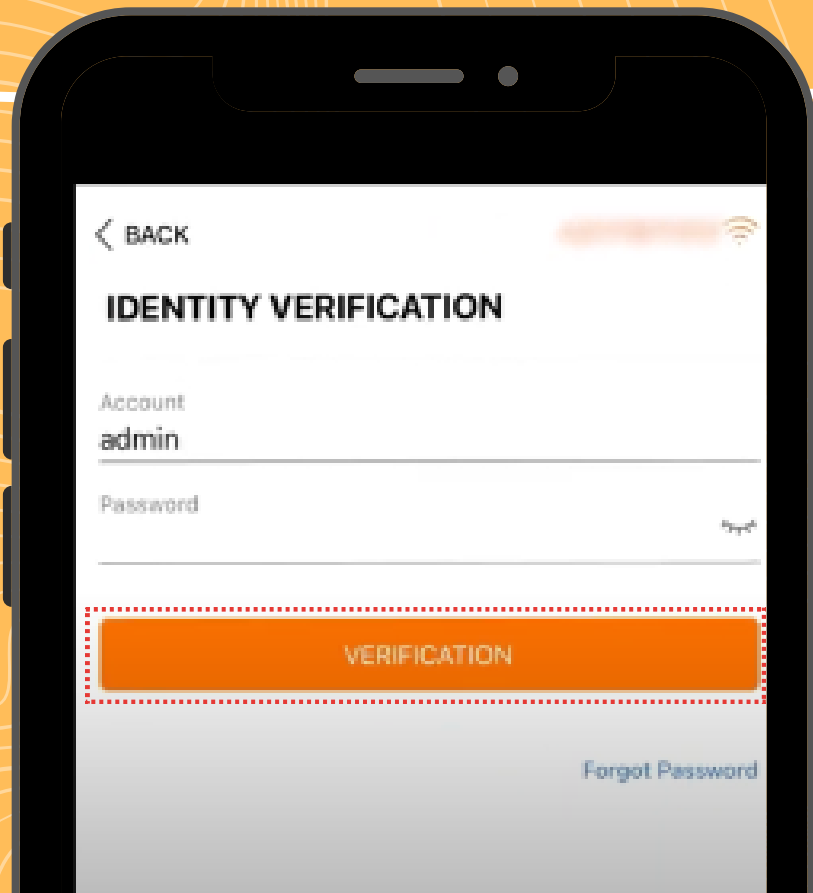
**STEP  
4**

Use the general account name "Admin" and password then click on "Verification"

Password  
pw8888

**STEP  
5**

The commissioning is split into 2 systems, select "Network" Connection



**STEP  
6**

Select the customer Home Wi-fi Network and enter password then click on "CONFIRM"



## SunGrow Inverter Wi-Fi Reconnection Procedure

Watch the video here:

<https://www.youtube.com/watch?v=Pd8iXSv5IaU>

**SUNGROW**

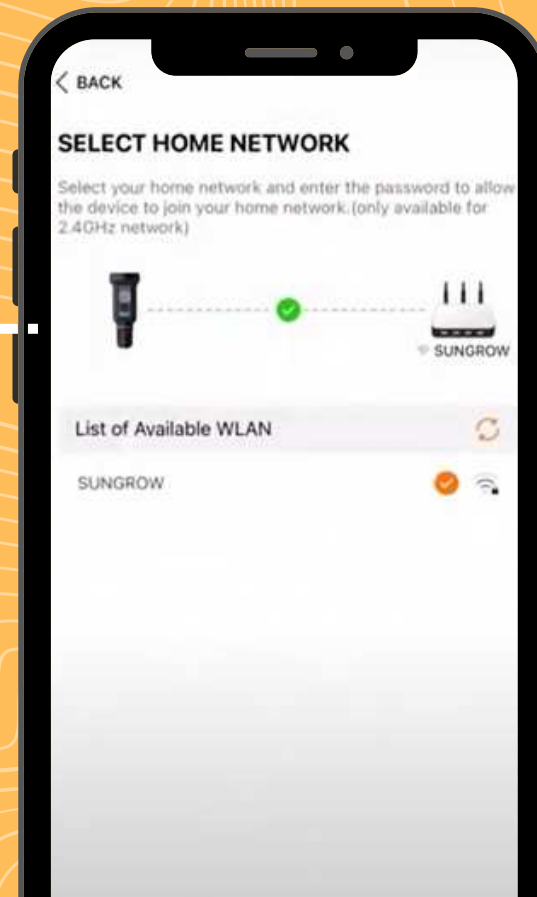
[positiveenergy.com.au](http://positiveenergy.com.au)



### STEP 7

Please wait until the connection is established

We will continue with Device Initialization

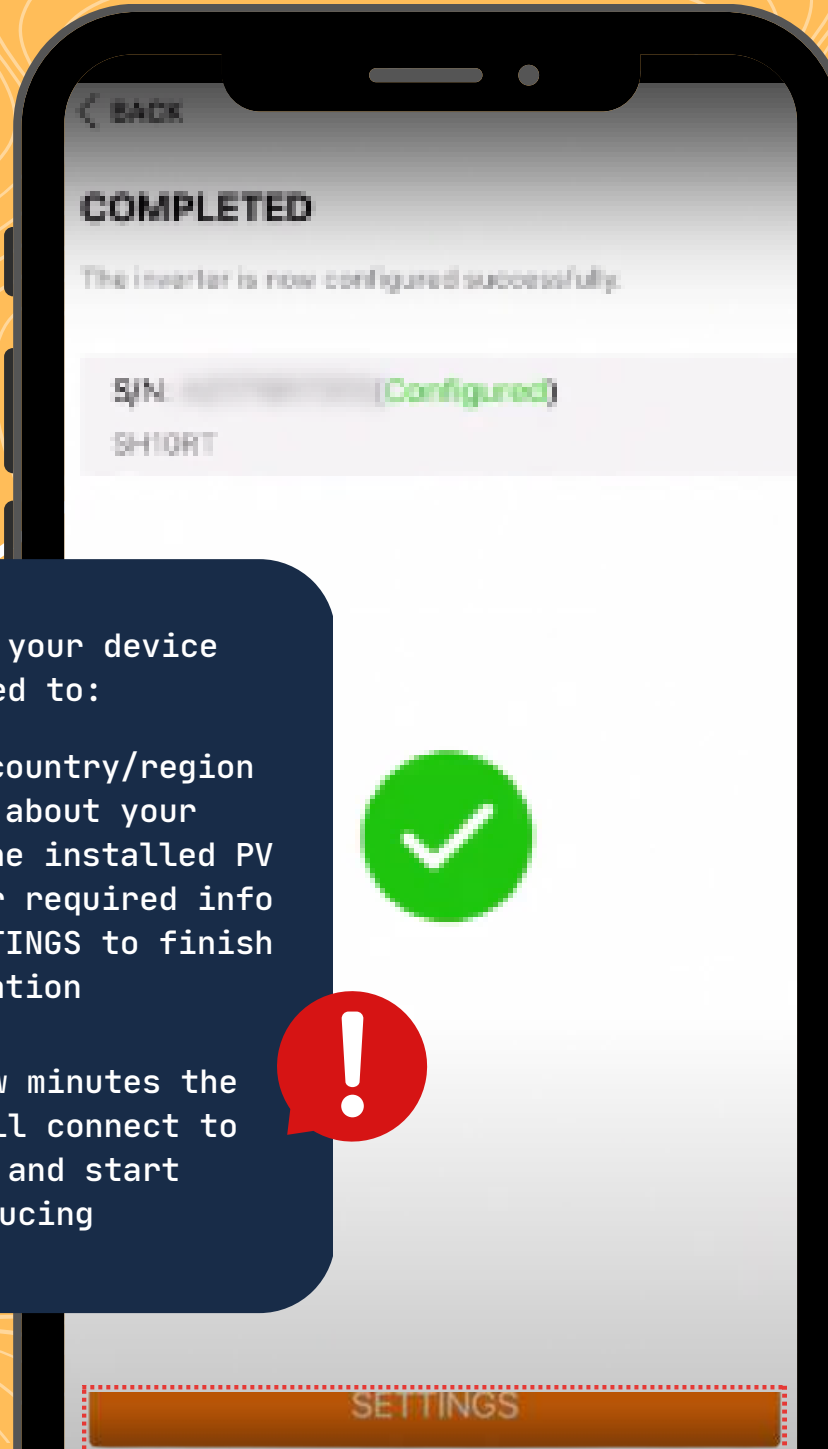


### STEP 8

To configure your device you need to:

- Select your country/region
- Fill in data about your plant like the installed PV power & other required info
- Click on SETTINGS to finish the configuration

Within a few minutes the inverter will connect to the grid and start producing



### STEP 9

Click COMPLETE to finish your work

